

INDICATION:

Patients at risk for pressure sores and/or requiring posture support and/or inclined to slide forward.



PRODUCT FEATURES: (ALL GSS CUSHIONS):

- GSS Cushions are designed with gentle contours to help provide comfort and protection against skin breakdown and to reduce forward sliding.
- Feature lateral side supports and slight abduction.
- Cushions are constructed of durable polyurethane foam.
- Designed to work in wheelchairs with standard sling seats, as well as those equipped with drop seats.
- Cover is a durable, comfortable and waterproof 4-way stretch vinyl material with a non-skid bottom to prevent the cushion from sliding forward.
- Meets CA #117 flame retardancy standards.

GSS DELUXE ONLY:

- Posey GSS Deluxe Cushions (Cat. No. 7515F-7535F) incorporate LiquiCell™ bladder technology that helps compensate against shear and friction. The low viscosity fluid-filled bladders utilize a series of strategically placed baffles that control the flow of the fluid, helping to reduce tissue shear stress.

MONITORING

WARNING Always follow your facility's policies and procedures for patient assessment, monitoring and rehabilitation.

INSPECTION

WARNING Inspect before each use: check for broken stitches; or torn, cut or frayed material. DO NOT use soiled or damaged products. Keep sharp objects away from cushion as they may puncture the LiquiCell™ bladders.

APPLICATION INSTRUCTIONS

1. Make sure the cushion dimensions match those of the wheelchair.
2. Place cushion on the wheelchair seating surface.
3. Align the front edge of the cushion with the front edge of the wheelchair seat.

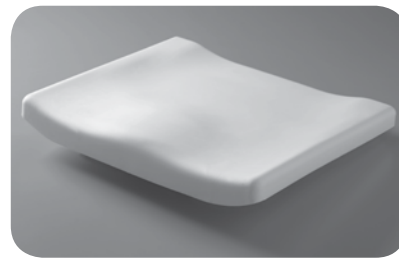
DIMENSIONS W x L x H	WEIGHT CAPACITY	GSS DELUXE CUSHIONS	GSS CUSHIONS
16" x 16" x 2" (41 cm x 41 cm x 5 cm)	200 lbs. / 91 kgs.	7515F	7615F
16" x 18" x 2" (41 cm x 46 cm x 5 cm)	200 lbs. / 91 kgs.	7516F	7616F
18" x 16" x 2" (46 cm x 41 cm x 5 cm)	200 lbs. / 91 kgs.	7525F	7625F
18" x 18" x 2" (46 cm x 46 cm x 5 cm)	200 lbs. / 91 kgs.	7530F	7630F
20" x 18" x 2" (51 cm x 46 cm x 5 cm)	200 lbs. / 91 kgs.	7535F	7635F

DISPOSAL

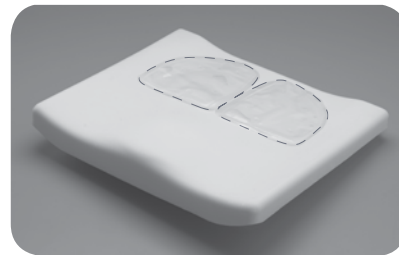
WARNING Properly dispose of the product per facility's policy for BIOHAZARDOUS materials.

STORAGE AND HANDLING

This device is designed for use in normal indoor environments. This device may be stored in ambient warehouse temperatures at normal humidity levels. Avoid excess moisture or high humidity that may damage product materials.



All Cushions.
Contoured polyurethane foam cushion for maximum comfort.



GSS Deluxe Cushion (only).
Location of LiquiCell™ bladders as sewn into the GSS Deluxe cover under the ischial tuberosities.

CLEANING INSTRUCTIONS:

- Wipe Clean with mild detergent. OSHA approved intermediate level disinfectants can be used per manufacturer instructions. DO NOT use phenol and benzyl based disinfectants.
- After cleaning, products MUST be rinsed with water to remove any residual chemicals.
- Make sure products are completely dry before use.



WARRANTY:

All Posey GSS and GSS Deluxe Cushions are warranted against manufacturing defects or foam surface breakdown under normal wear for 18 months from date of purchase. The Posey Company will repair or replace the cushions at their discretion.