

The Posey Door Guard Alarm and Do Not Enter Banner Alarm provide a visual reminder to residents/patients and deters exit through doorways. Once activated, the alarm alerts caregivers of an unassisted exit or movement beyond a marked area.

Features:

- Attaches to door frame with hook and loop adhesive patch.
- Removes easily in case of emergency.
- Adjustable to door frame widths up to 53" (135 cm).
- Pre-connected magnet attaches to faceplate of alarm.
- Five different alarm tones allow caregivers to assign a specific tone to each room.
- Alarm unit is easily converted to bed, wheelchair, or geri-chair application (see enclosed instructions for Personal Alarm 8202L).
- 95dB Alarm sound at one foot.
- Optional sound dampening plug.
- Low battery light indicator.
- Impact resistant plastic case.
- Compact lightweight alarm: 2" x 4" x 1" (5 cm x 10 cm x 2½ cm), weighs 4 ounces.
- Posey Limited Lifetime Warranty.

- REF 8205** Door Guard Alarm
- REF 7999** Do Not Enter Banner Alarm

Inspection



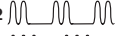
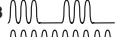
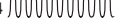
⚠WARNING Inspect before each use. Check for broken stitches, or torn, cut or frayed material. Banner does not prevent residents from exiting through door.

Application Instructions

1. Selecting Alarm Tone: The Personal Alarm may be set to alarm in one of five different alarm tones.
 - a. To step through the five tone options, press the tone selector (6) on the side of the unit.
 - b. When the magnet is engaged, pressing the tone selector will produce a two second audio demonstration of each tone.
 - c. If the two second demonstration is not enough to determine your tone preference, remove the magnetic block. Press the tone selector until the desired tone is heard, then replace the magnet.
 - d. The last tone selected will automatically sound when the alarm is activated.



Note: The tone you select will affect your alarm's 9-volt battery life. See chart below.

VARIABLE TONE	CALCULATED BATTERY LIFE*
DEFAULT 	70 hours
Tone 1 	280 hours
Tone 2 	140 hours
Tone 3 	93 hours
Tone 4 	35 hours

*Based on Continuous Alarm

2. Attach the alarm unit to the doorknob side of the door frame, above waist level. Attach self-adhesive loop (fuzzy) patch by peeling off backing and pressing into place. Press the hook (rough) patch on the back of the alarm firmly to the loop on the mounting surface.
3. Attach the white plastic hook on the opposite side of the door frame by peeling off backing and pressing into place.
4. Position the Door Guard Banner across the doorway by attaching the magnet to the metal plate on one side and the loop to the plastic hook on the other side. To reposition the pre-connected magnet, unthread the key ring and reconnect through the grommet hole on the opposite side.
5. The Banner should be taut across the doorway. Adjust the banner by selecting the appropriate loop and attaching to the plastic hook.

Testing Instructions

ALWAYS test after application to door. To test the Door Guard, place your hand or arm against the mesh to move the banner far enough to disengage the magnet from the faceplate of the Personal Alarm. Alarm should sound. **Note:** Your Door Guard Alarm and Do Not Enter Banner Alarm come with one additional magnet and pull cord for use in a bed or chair. Be sure to store in a safe place.

Optional Sound Dampening Plug:

To decrease the alarm volume, insert the Sound Dampening Plug into the hole on the face of the alarm unit. For maximum alarm volume, DO NOT use plug.

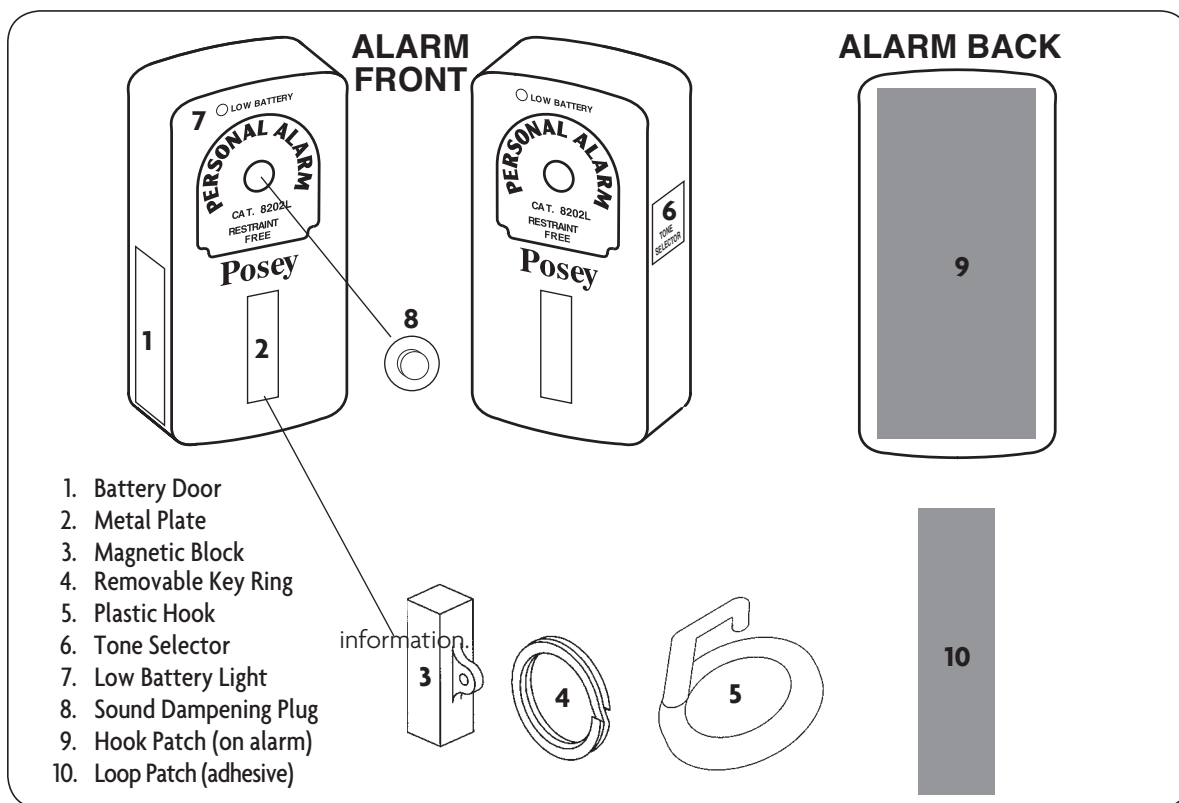
⚠WARNING

- **NEVER** use sound dampening plug if patient can move out of hearing distance of staff by wheelchair or other means.
- **NEVER** place alarm unit closer than two feet from patient's ear (even if sound dampening plug is in use).

ALWAYS verify you can hear the alarm volume at the furthest possible distance before leaving patient unattended.

NEVER place the alarm unit closer than two feet from patient's ear to minimize patient noise exposure. Refer to Occupational Safety and Health Administration Occupational Noise Exposure Standards 1910.95 for additional

(Continued On Page 2)



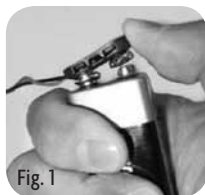
Alarm Testing Instructions

NEVER leave a patient unattended without first testing the alarm to ensure it is functioning as intended.

To test the Personal Alarm, remove the magnet from the faceplate. The alarm should sound.

Battery Replacement

1. Make sure magnet is attached to the metal plate.
2. Press down on arrow and slide the battery door open.
3. Remove the battery from the compartment and hold in one hand with thumb on the terminal cap. Battery connection wires should be away from the thumb. **DO NOT** pull the terminal cap wires.
4. Use thumb to push the terminal cap up, off the battery (Fig. 1).
5. Connect terminal cap to the new battery. Make sure the battery is securely connected to the terminal cap and insert into alarm unit.



6. Slide battery door closed.
7. Test system to verify it is working properly before leaving patient unattended.

⚠ WARNING

- Battery can explode or leak and cause damage to alarm or skin if installed backwards, disassembled, fully discharged or exposed to water, fire or high temperatures.
- **ALWAYS** install a completely new battery when the low battery light illuminates.
- Installing battery incorrectly can cause battery to utilize more power than normal and discharge sooner, causing possible corrosion. Take care when installing new battery.

Washing Instructions:



Machine wash hot, tumble dry low. Door Guard and Do Not Enter Banner may be laundered. The alarm surface may be wiped clean with a mild disinfectant.

Maintaining Hook and Loop:

If hook and loop does not adhere, it is most likely due to collection of dust and lint. Clean hook by brushing with a stiff brush.

Storage Instructions

- This device is designed for use in normal indoor environments.
- This device may be stored in ambient warehouse temperatures at normal humidity levels. Avoid excess moisture or high humidity that may damage product materials.

Disposal

⚠ WARNING Dispose of per your facility policy or applicable local code for BIOHAZARDOUS material.

Limited Lifetime Warranty:

The Posey Company warrants to the original purchaser, the alarm unit to be free from defects in materials and workmanship for the life of the unit. Warranty void if unit is opened, damaged, or submerged. This warranty gives you specific legal rights, and you may also have other rights, which vary from state to state.