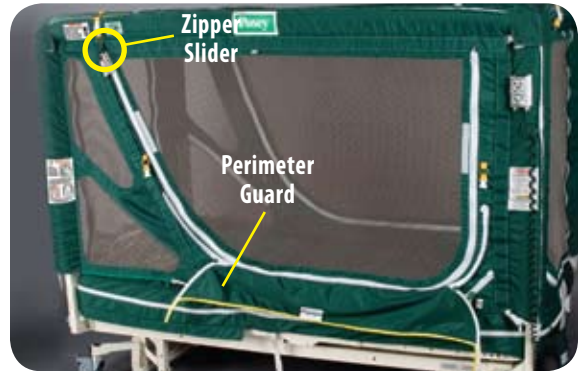


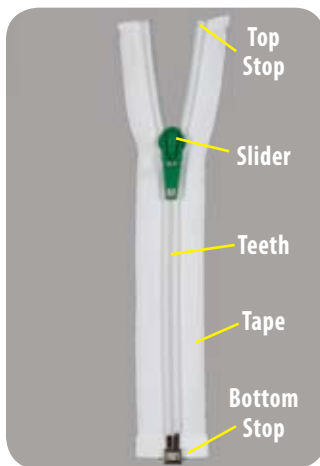
## TROUBLESHOOTING INFORMATION AND FREQUENTLY ASKED QUESTIONS

### CANOPY

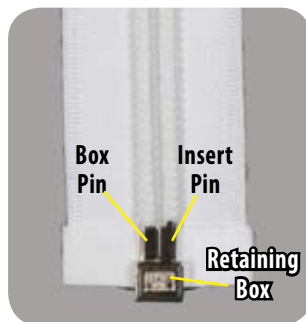
1. Q: How do I know if the side panel is oriented properly after laundering?  
A: To reinstall the side panel, make sure the zipper slider and the Perimeter Guard face outward (See Fig. 39).
2. Q: Why is the zipper difficult to open or close?  
A: It could be one or more of the following reasons:
  - a. Fabric, bedding, or other material caught in the slider. To release material, back the slider off by pulling the tab backward in the opposite direction until the slider is free. Make sure the canopy is intact and there are no tears or holes in the fabric.
  - b. Check the zipper teeth to make sure none of the teeth are broken (See Fig. 43).



**Fig. 39. Zipper Slider and Perimeter Guard**



**Fig. 40. Tape**



**Fig. 41. Zipper Close Up**

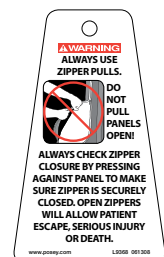


**Fig. 42. Undamaged Zipper Slider**



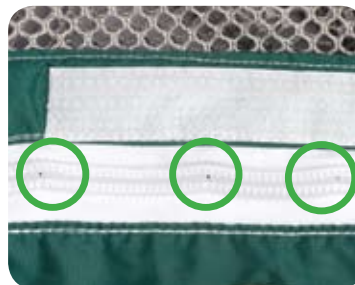
**Fig. 43. Zipper Teeth Broken**

- c. Use the pull-tab to slide the zipper. Each access panel zipper has a warning instruction plastic tag (See Fig. 44). If the plastic tag is damaged or becomes unreadable, it must be replaced. Call Posey at 1.800.44.POSEY (1.800.447.6739) and request a replacement free of charge (Part #L9368).



**Fig. 44. Plastic Tag**

Inspect zipper coils for any kinks or misalignment (See Fig. 45). **ALWAYS** test the entire length of each zipper by pressing against the panel near the zipper to make sure it is securely closed and the access panel will not open when pressure is applied (See Fig. 45A).



**Fig. 45. Kinks in zipper**

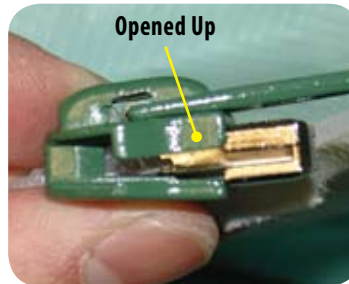


**Fig. 45A. ALWAYS test that the zipper is securely closed by pressing against the entire length of the closed zipper to make sure it will not open when pressure is applied**

3. Q: Why is the zipper separating after zipping up (See Fig. 46)?  
 A: The slider is damaged and does not properly lock the teeth when it is being opened up (See Fig. 47). DO NOT use the Posey Bed. Call Posey Technical Service for service. This problem can be avoided by **ALWAYS** using the zipper pull-tab to open the zipper. **NEVER** rip the access panel open because it will damage the slider and prevent the zipper from closing securely (See Fig. 48).



**Fig. 46. Zipper Separating**



**Fig. 47. Zipper Slider Damaged from ripping the access panel open**



**Fig. 48. DO NOT Rip Panels Open**

4. Q: What can I do if patient is rubbing against the netting?  
 A: Take the patient out of the Posey Bed and consult the doctor or the CARE PLAN about proper care.
5. Q: How do I clean the canopy if it becomes soiled?  
 A: For cleaning instructions, please refer to Pages 20-22.
6. Q: How do I clean lint or foreign material from the hook and loop tabs and strips?  
 A: Use a stiff brush to remove any lint or foreign material. Close hook and loop strips whenever possible before laundering to prevent lint buildup in hook material.
7. Q: How can I get extra training materials or the Posey Bed DVD?  
 A: Please call Posey Technical Service at 1.800.44.POSEY (1.800.447.6739) or go to [www.posey.com](http://www.posey.com).
8. Q: Where do I run IV lines?  
 A: Please refer to “Tube & Drainage Ports” section on Page 19.
9. Q: Can I use an inflatable air-type mattress?  
 A: No. The Posey Bed is designed for use with standard mattresses only. The mattress must be fully zippered into the mattress compartment at all times. Please refer to the “Mattress Compartment” section on Page 18.
10. Q: Can I use our facility mattress during cleaning of the Posey Bed mattress?  
 A: Yes, if it meets the size requirements for the Posey mattress compartment. The mattress must be fully zippered into the mattress compartment at all times. Please refer to the “Mattress Compartment” section on Page 18.

## FRAME

1. Q: Why is the bed not raising or lowering?  
 A: a. Check to make sure the power cord is plugged in to a powered outlet.  
 b. Check if the remote control is plugged in (See Page 29).
2. Q: How do I unlock the casters to move the bed out of a room?  
 A: To unlock the casters, use your foot to push the metal clip of each caster until it releases. Please refer to the “Locking Casters” section on Page 17.
3. Q: Where does the bed control connect?  
 A: Please refer to “Motor and Control Box Technical Information” section on Page 29.

## GENERAL FAQ'S

1. Q: Where do I find the serial number of the Posey Bed canopy?  
 A: The serial number label is stored in two locations:
  - a. At the bottom right of the head side of the bed (See Fig. 49).
  - b. On the inside of the bottom post of the foot side of the bed (See Fig. 50).



**Fig. 49. Head of Bed**



**Fig. 50. Foot of Bed**

2. Q: Where are the side rails?  
 A: The Posey Bed 8070 does not have side rails. **NEVER** use side rails with the Posey Bed, as doing so will increase the risk of ENTRAPMENT. The Posey Bed has two Perimeter Guards, which act as “soft” side rails to help reduce the risk of a patient fall while a “U” access panel is open for patient care. For proper use, please refer to the “Perimeter Guards” section on Page 18.
3. Q: Can I use a patient lifter with the Posey Bed 8070?  
 A: Yes, however, **NEVER** use a patient lifter for transfer unless it has been tested to make sure there is enough clearance under the canopy frame to do so safely. The clearance of the opening side access panel is 38”H x 46”W (97 cm x 117 cm) (at bottom) (See Fig. 51).



**Fig. 51. Access Panel Opening Clearance**